

Instructions for EasiCollect™+

Product Information sheet

Code: A-WB120472

For research use only

NOT FOR USE IN DIAGNOSTIC PROCEDURES

Single Use Only

Store product at room temperature.

Do not open package before use.

EasiCollect+ is an all-in-one single use product for the collection and storage of cheek cells. Cells are captured on the foam applicator by swabbing the inside of both cheeks and then transferred to an integral Indicating FTA™ Card. FTA Cards are treated with a proprietary chemical mix that breaks open cells and releases DNA. The same chemical mix then protects the DNA from damage. The Indicating FTA Cards also contains a dye that turns

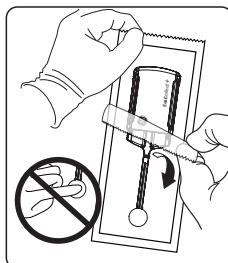
This provides an easy method for sample location.

Helpful hints:

- Always wear gloves when handling biological samples, and avoid touching the surface of the foam head to prevent contamination.
- Sample collection may be improved if subjects avoid eating, drinking or smoking 30 minutes prior to sample collection.

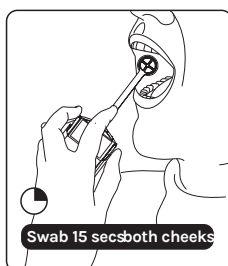
FTA Sample Collection

1.



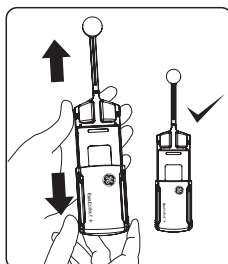
When collecting samples, always wear gloves and avoid touching the surface of the sample area and the foam head to avoid contamination. Slide out the EasiCollect+ product.

2.



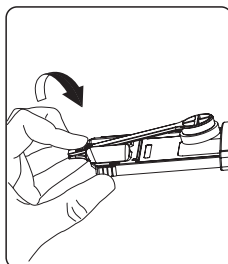
Place the foam head in the mouth and using moderate pressure run it along the gum-line and under the tongue. Once wet, rub the foam head inside of each cheek for 15 seconds. It is extremely important to ensure that the foam head is coated with saliva during this step to enable good sample transfer. Remove the foam head from the mouth.

3.



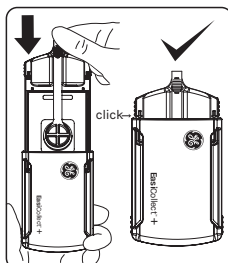
Hold the EasiCollect+ as shown and slide the cover open.

4.



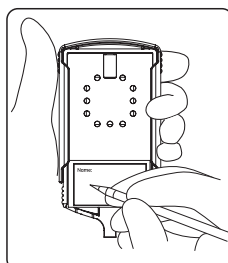
Fold the arm over until the foam head contacts the FTA collection paper.

5.



Slide the cover closed until it clicks and the cover edge lines up with the arrow on the body.

6.

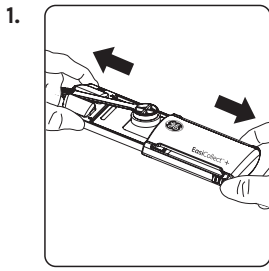


Record identification information on the back of the FTA Card Pack. After the indicating FTA card is dry, the sample can be processed immediately or packaged for transport. The EasiCollect+ can be transported in a multibarrier pouch (WB100037) to a laboratory. Dried sample cards can be stored for long periods of time in a multibarrier pouch with a desiccant packet (WB100003).



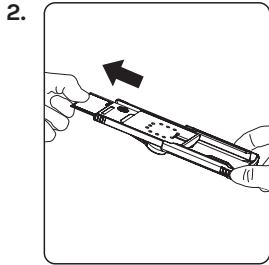
**ARROWHEAD
FORENSICS**

FTA Card Removal



1. Once dried, the sample card can be removed from the EasiCollect+ and sent to the laboratory. Wearing gloves, hold the EasiCollect+ as shown and slide the cover open releasing the foam head.

On occasion the swab head may stick to the FTA paper during sample transfer. This does not affect the quality of the DNA sample or the performance of the sample in STR analysis.



2. The sample card can then be removed from the rear of the EasiCollect+.

FTA Sample Processing

Direct PCR

1. Remove a 1.2 mm punch from the dried Indicating FTA Card using a Harris Uni-Core™ Punch (WB100028).
2. Add PCR reagents to the disk and proceed with the amplification process according to manufacturers' instructions.

Punch-In PCR

1. Remove a 2.0 mm punch from the dried Indicating FTA Card using a Harris Uni-Core Punch (WB100029).
2. Wash the punched disk with 200 µL FTA Purification Reagent (WB120204) three times for 5 minutes each. Discard the washes:
3. Wash the punched disk twice with 200 µL TE-1 buffer (10 mM Tris-HCl, 0.1 mM EDTA, pH 8.0). Discard the washes.
4. Add PCR reagents to the disk and proceed with the amplification process according to manufacturers' instructions.

Legal

GE, the GE Monogram, imagination at work, EasiCollect, FTA, and Whatman are trademarks of General Electric Company.

Harris Uni-Core is a trade mark of Shunderson Communications, Inc. All other third party trademarks are the property of their respective owner.

© 2016 General Electric Company
First published January 2016

All goods and services are sold subject to the terms and conditions of sale of the company within GE Healthcare which supplies them.

A copy of these terms and conditions is available on request. Contact your local GE Healthcare representative for the most current information.

<http://www.gelifesciences.com>

GE Healthcare UK Limited,
Amersham Place, Little Chalfont,
Buckinghamshire, HP7 9NA UK

GE Healthcare Bio-Sciences AB,
Björkgatan 30, 751 84
Uppsala, Sweden

GE Healthcare Europe, GmbH,
Munzinger Strasse 5, D-79111
Freiburg, Germany

GE Healthcare Bio-Sciences Corp.,
100 Results Way, Marlborough,
MA 01752 USA

GE Healthcare Dharmacon, Inc.,
2650 Crescent Dr, Lafayette,
CO 80026 USA

HyClone Laboratories, Inc.,
925 W 1800 S, Logan,
UT 84321 USA

GE Healthcare Japan Corporation,
Sanken Bldg., 3-25-1, Hyakunincho Shinjuku-ku,
Tokyo 169-0073 Japan

