

# THE ALL NEW FSIS CSE



The FSIS-CSE is the latest addition to the robust family of Full Spectrum Imaging Systems available from Arrowhead Forensics. The FSIS-CSE is specifically designed for the Crime Scene Investigator as it is portable but has all the capabilities of the larger FSIS lab systems. With 20 megapixels of resolution, and sensitivity from 254nm (shortwave UV) to 1100nm, the FSIS-CSE can easily capture a full handprint at 1000 PPI (pixels per inch), and micro evidence up to 4,800 PPI.

It is especially suited for crime scenes, such as interior living areas, bathrooms, or small office areas. Even confined spaces such as the interiors of vehicles. The system features the patented FSIS II camera mounted to a Microsoft tablet, with exciting new innovations including an automated LED/filter wheel selection, integrated LED light assemblies, and auto-focus. Users can select a button via touchscreen and the system will automatically select the proper filter and LED combination for blood, saliva, biological stains, GSR, and untreated and treated latent fingerprints. The FSIS-CSE provides the ability to auto-focus from shortwave UV to near IR. This patented technology is not available elsewhere and facilitates easier, faster, more efficient crime scene scanning and photography.

FSIS-CSE is compatible with other FSIS II configurations and the Automated Fingerprint Identification System (AFIS) submission and data management system. The system meets and exceeds the minimum requirements of 1,000 PPI when capturing an image up to 5.4 inches x 3.6 inches. The FSIS-CSE's file format allows for easy export to image editing software such as Photoshop®.

## WHAT'S INCLUDED

- Industry leading FSIS II camera mounted to a Microsoft tablet running Windows 11 Pro
- Integrated LED lights more than capable of sufficiently illuminating all types of evidence
- 35mm, F2.8 - F16 quartz lens allowing the capture of images across the full spectrum of light (254nm - 1100nm)
- 13-inch, high resolution display allowing for easy real-time review of images
- Rechargeable lithium-ion batteries (2) for extended operation time in remote areas
- Battery charger and cable
- Quad-Pod for stable image capture when needed
- Tripod for vertical stability when needed
- 3 pairs of forensic goggles (Yellow, Orange, and Clear UV)
- Pelican case with wheels and a handle for protection and portability

Specifications subject to change.

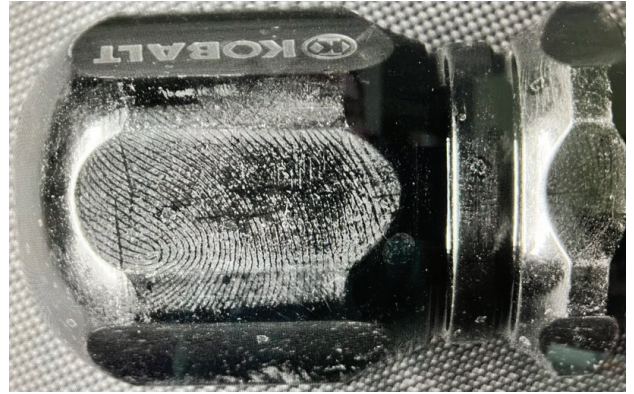
**A-FSIS-CSE**.....Please call for pricing

\*Price includes 3 year manufacturer warranty.

# FSIS CSE EXAMPLES



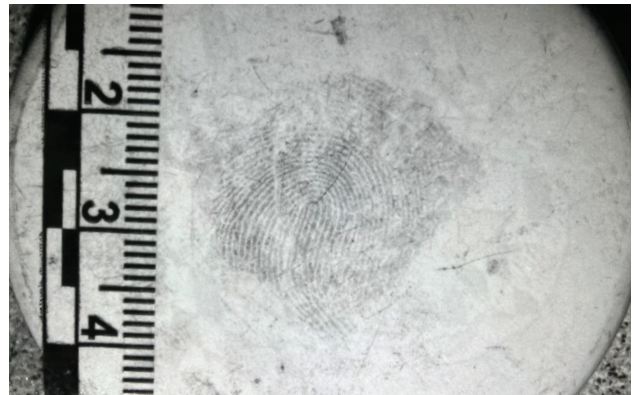
1. Untreated latent fingerprint on electrical tape visualized with 254nm (shortwave UV)



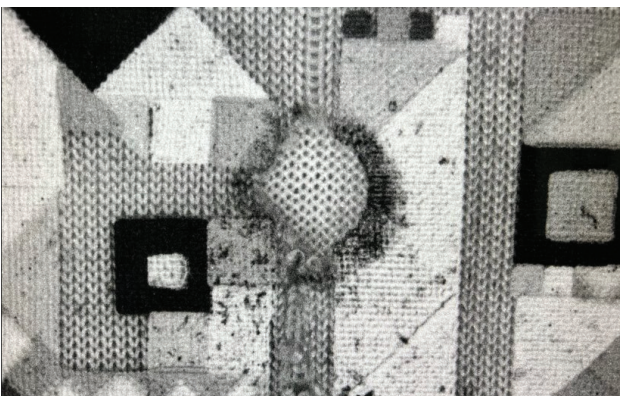
2. Untreated Latent on screwdriver visualized with 254nm (shortwave UV)



3. Urine Stain on fabric visualized with 455 blue LED



4. Latent fingerprint on button visualized with IR



5. Gunpowder Residue visualized with IR



6. Latents visualized with fluorescent powder and 455nm LED